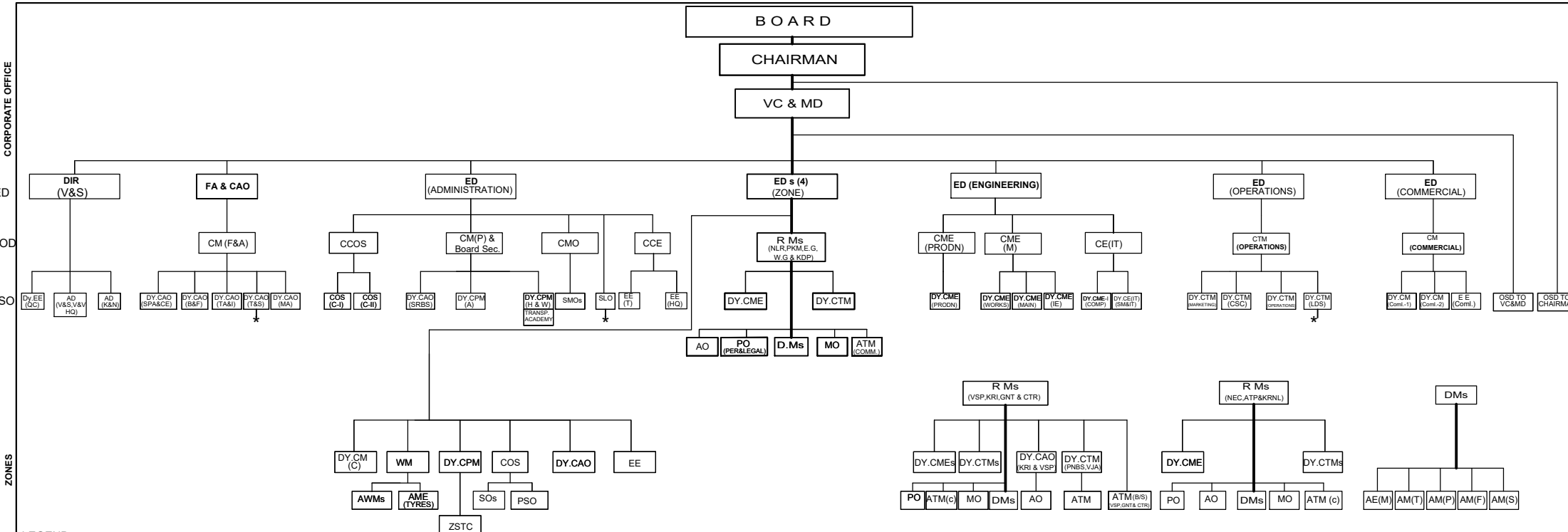


ORGANOGRAM OF A.P.S. R.T.C. (Sep- 2018)



LEGEND

VC&MD	VICE-CHAIRMAN & MANAGING DIRECTOR	DM	DEPOT MANAGER
DIR (V&S)	DIRECTOR (VIGILANCE & SECURITY)	AME	ASST.MECHANICAL ENGINEER
FA	FINANCIAL ADVISER	AO	ACCOUNTS OFFICER
CAO	CHIEF ACCOUNTS OFFICER	ATM	ASST. TRAFFIC MANAGER
ED	EXECUTIVE DIRECTOR	AWM	ASST.WORKS MANAGER
A	ADMINISTRATION	DY.EE	DEPUTY EXECUTIVE ENGINEER
E	ENGINEERING	MO	MEDICAL OFFICER
O	OPERATIONS	PO	PERSONNEL OFFICER
C	COMMERCIAL	PSO	PURCHASE OFFICER
RM	REGIONAL MANAGER	SO	STORES OFFICER
CCE	CHIEF CIVIL ENGINEER	PRO	PUBLIC RELATION OFFICER
CCOS	CHIEF CONTROLLER OF STORES	IE	INDUSTRIAL ENGINEERING
CE(IT)	CHIEF ENGINEER(IT)	COML	COMMERCIAL
CM (A & F)	CHIEF MANAGER (AUDIT & FINANCE)	H	H R D
CME (P)	CHIEF MECHANICAL ENGINEER (PRODUCTION)	COMP	COMPUTERS
CME (O)	CHIEF MECHANICAL ENGINEER (OPERATIONS)	CSC	CENTRAL SCHEDULE CELL
CMO	CHIEF MEDICAL OFFICER	IT	INFORMATION TECHNOLOGY
CPM	CHIEF PERSONNEL MANAGER	LDS	LONG DISTANCE SERVICES
CTM	CHIEF TRAFFIC MANAGER	W	WELFARE
CM (C)	CHIEF MANAGER (COMMERCIAL)	MA&IT	MAIN ACCOUNTS & INCOME TAX
Sec.to Corpn.	SECRETARY TO CORPORATION	NECR	NORTH EAST COASTAL REGION
SSO	SENIOR SCALE OFFICERS	P&D	PLANNING & DESIGNING
COS	CONTROLLER OF STORES	QC	QUALITY CONTROL
DY.CAO	DEPUTY CHIEF ACCOUNTS OFFICER	SCH	SCHEDULES
DY.CME	DEPUTY CHIEF MECHANICAL ENGINEER	SPA&CE	STORES PAY ALLOWANCES&CAPITAL EXPENDITURE
DY.CPM	DEPUTY CHIEF PERSONNEL MANAGER	TA	TRANSPORT ACADEMY
DY.CTM	DEPUTY CHIEF TRAFFIC MANAGER	TRS	TYRE RETREADING SHOP
EE	EXECUTIVE ENGINEER	T&S	TRUSTS & SCHEMES
LAO	LAND ACQUISITION OFFICER	ZWS	ZONAL WORK SHOP
SLO	SENIOR LAW OFFICER	ZSTC	ZONAL STAFF TRAINING COLLEGE
S.MO	SENIOR MEDICAL OFFICERS	C	CONTRACT CELL
WM	WORKS MANAGER	B & F	BUDGET & FINANCE
OSD	OFFICER ON SPECIAL DUTY	SRBS	STAFF RETIREMENT BENEFIT SCHEME
BS	BUS STATIONS	SBT	STAFF BENEVOLENT-CUM- THRIFT FUND
		C & B	CHASSIS & BODY
		R & T	RECRUITMENT & TRAINING
		P	PRODUCTION

TOTAL MAN POWER = 53, 411 (As on 16th Aug' 2018)
(EXCLUDING OFFICERS)
TOTAL OFFICERS = 410

HEAD OFFICE UNITS : TA , & WIND ENERGY PROJECT-Ramagiri(10MW)

A.P. STATE AREA	
ZONES	4
REGIONS	12
DEPOTS	128
TOTAL BUSES (RTC + Hired)	9,191 + 2,669= 11,860(31st July 2018)
ZSTC	4
ZWSs	4
TRSS	4
TA	1

UNITS COVERED IN EACH ZONE

ED(VJA)	ED(VZM)	ED(KDP)	ED(NLR)
VIJAYAWADA ZONE (35) WEST GODAVARI (8) KRISHNA (14) GUNTUR (13)	VIZIANAGARAM ZONE(28) NECR (9) VISAKHAPATNAM (10) EAST GODAVARI (9)	KADAPA ZONE(33) KURNOOL (12) ANANTAPUR (13) KADAPA . . . (8)	NELLORE ZONE(32) PRAKASAM (8) NELLORE (10) CHITTOOR (14)
ZWS - VJA TRS - VJA ZSTC- VJPM	ZWS - VZM TRS - VZM ZSTC- VZM	ZWS - KDP TRS - KDP ZSTC- KURNOOL	ZWS - NLR TRS - NLR ZSTC- NLR

VJA	VIJAYAWADA
VZM	VIZIANAGARAM
KDP	KADAPA
NLR	NELLORE

NOTE : SHOWN UP TO SENIOR SCALE OFFICER CADRE AT CORPORATE OFFICE, IN GENERAL.
THE NO. OF DEPOTS INDICATED IN BRACKETS

HEAD OFFICE SHIFTED FROM HYDERABAD TO VIJAYAWADA on 27 - 06 - 2016

* - STATIONED AT BUS BHAVAN, HYDERABAD

NOTE: BOARD APPROVAL FOR ABOVE STRUCTURE AWAITED

CHIEF ENGINEER(IE)
APSRTC, VIJAYAWADA